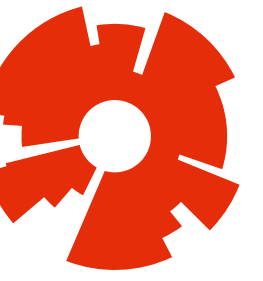




RU Strategy

2022 – 2023





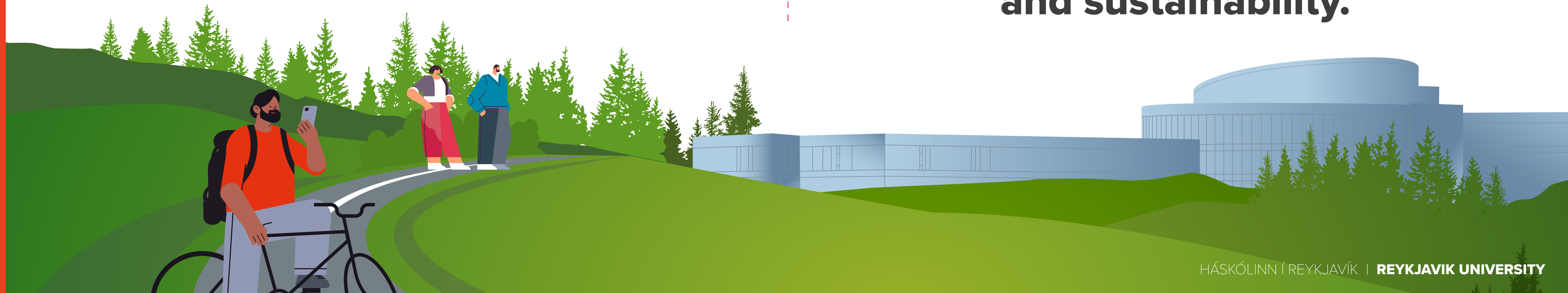
The Role & Vision of Reykjavík University

ROLE

**We prepare society
for the future.**

VISION

**We are at the forefront,
internationally, in creating
and sharing knowledge guided
by ethicality, inclusivity,
and sustainability.**





Emphases 2022 – 2023

THE STUDENT EXPERIENCE

- Learning founded on excellence in teaching
- Flexible study paths
- Life-long learning

KNOWLEDGE CREATION

- Leading in research
- Active in sharing with the community and in the utilization of knowledge
- A leading University of innovation

CONFLUENCE

- Active international collaboration
- Close cooperation with industries and the professional community
- Interdisciplinary collaboration

EXCELLENCE

- Desirable workplace
- Modern facilities and a supportive environment for study and research
- Constant monitoring of quality for improvement





THE STUDENT EXPERIENCE

Learning founded on excellence in teaching

Flexible study paths

Life-long learning

Learning founded on excellence in teaching

THIS INCLUDES THE FOLLOWING:

- Diverse teaching methods and diverse assessments are used.
- Students have challenging tasks and projects and acquire a solid academic foundation.
- Students receive training in scientific work methods and have the opportunity to participate in research projects.
- Students are active participants in their education and are responsible for their learning.
- Students have the opportunity to work on projects related to industries and the professional community and have the possibility of internships.
- Facilities and environment at RU contribute to effective learning and teaching.
- Assessment of the quality of teaching and results from RU and others is used in selecting and improving educational methods.

THIS ALSO INCLUDES:

- Emphasis of the university and faculties on digital support for teaching and digital teaching.
- Project-oriented and project-driven learning.
- Open, flexible, and short courses.
- The University's inclusion, equality, and language policies.
- The development and quality control of research-based teaching.





THE STUDENT EXPERIENCE

Learning founded on excellence in teaching

Flexible study paths

Life-long learning

Flexible study paths

REYKJAVÍK UNIVERSITY AIMS TO OFFER FLEXIBLE STUDY PROGRAMS IN TWO WAYS.

- 1) RU strives to develop and maintain a range of teaching courses in line with the needs of industries and the future society.
- 2) To offer individual-oriented learning because we want to create flexibility within studies so that individuals can tailor their studies to a significant extent to their goals and areas of interest. Students are also encouraged to seek interdisciplinary education and to attend part of their studies at foreign collaborating universities.

THIS ALSO INCLUDES:

- Development of open study programs.
- Development of short study programs.
- Development of interdisciplinary study programs.





THE STUDENT EXPERIENCE

Learning founded on excellence in teaching

Flexible study paths

Life-long learning

Lifelong learning

RU REALIZES THE IMPORTANCE OF LIFELONG LEARNING AND FLEXIBILITY IN EDUCATION.

- RU develops a career support system where graduated students, and others who want to, are offered courses and short study lines as needed throughout their working life.
- Previous studies are evaluated fairly, and students are allowed to use their former education to continue learning for different carrier paths.
- The Open University at RU offers a variety of courses for continuous education.
- RU offers flexible and open master's programs suitable for people who have already established themselves, including management education for people with diverse backgrounds.
- RU has the access program Háskólagrunnur for preliminary studies, dedicated to preparing aspiring students for university education.
- RU's Department of Applied Engineering offers vocationally educated people various study programs.
- Skema at RU offers programming courses for children and teenagers.
- RU offers several open lectures to the public and industry.





KNOWLEDGE CREATION

Leading in research

*Active in sharing
with the community
and in the utilization
of knowledge*

*A leading University
of innovation*

Leading in research

- Research work at RU is highly rated internationally and has a firm foothold in Icelandic society. Robust research work of excellent quality is critical in RU's operations.
- Research at RU uses scientific methods to create new knowledge and present results where they are criticized, verified and evaluated by external experts. Research students gain experience in this process under supervision.
- Research staff is constantly updating their knowledge and can use their research to enrich their students' education.

RU EMPHASIZES:

- Independence of scientific work.
- Research studies.
- Active scientific impact and participation in developing science on a global scale.
- Local and societal impact.
- Conveying results and science.





Active in sharing with the community and in the utilization of knowledge

KNOWLEDGE CREATION

Leading in research

*Active in sharing
with the community
and in the utilization
of knowledge*

*A leading University
of innovation*

RU STANDS FIRM IN THE COMMUNITY AND ACTIVELY PARTICIPATES IN IT. RU'S STAFF CONSIDERS ITS WORK MEANINGFUL, INFLUENTIAL, AND IMPACTFUL.

- The knowledge created at RU is actively shared with the community using many different mediums.
- RU is a leader in conveying to the Icelandic society knowledge created internationally.
- RU makes sure its research results, projects and solutions gain independent life outside the University for society's greater good.





KNOWLEDGE CREATION

Leading in research

*Active in sharing
discoveries and findings
to the society and in the
utilization of knowledge*

***A leading University
of innovation***

A leading University of innovation

IN STUDIES, RU EMPHASIZES:

- Teaching innovation and entrepreneurship.
- Building the courage to try new methods.
- Pushing and applying state-of-the-art training.

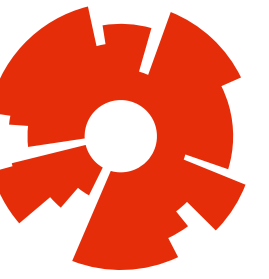
IN RESEARCH, RU EMPHASIZES:

- The practical utilization of research and knowledge.
- Encouraging students and teachers to bring their ideas to market. This includes teaching innovation, start-up policy, intellectual property policy, and participating in Auðna and Klak.

AS A SOCIALLY RESPONSIBLE UNIVERSITY, RU EMPHASIZES:

- Supporting innovation in Iceland with education, faculty expertise, and consultation.
- Importing knowledge of innovation and entrepreneurship from international sources.
- The role of innovation in creating knowledge, improving quality of life, and strengthening the economy.





CONFLUENCE

Active international cooperation

Close cooperation with industries and the professional community

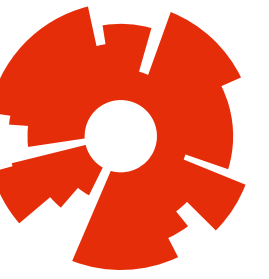
Interdisciplinary collaboration

Active international cooperation

RU'S INTERNATIONAL COLLABORATION HAS FOUR DIFFERENT LAYERS:

- 1)** Collaboration in research, which is the responsibility of each researcher.
- 2)** Exchange studies and collaboration in teaching and learning at departmental and University levels.
- 3)** Strategic cooperation.
 - University departments collaborating with similar departments abroad
 - The University as a whole
- 4)** Collaboration aimed at transferring knowledge to Iceland.





CONFLUENCE

*Active international
cooperation*

***Close cooperation
with industries and
the professional
community***

*Interdisciplinary
collaboration*

Close cooperation with industries and the professional community

Close cooperation with industries has been an emphasis at RU from the beginning. RU collaborates extensively with numerous companies and institutions (public and private).

COOPERATION IN VARIOUS TYPES OF EDUCATION:

- Consultation on new study programs and study development.
- Lessons and guest lectures.
- Internships and field studies.
- Practical projects.

COLLABORATION IN KNOWLEDGE CREATION IS VITAL AND INCLUDES:

- Research collaboration.
- Sharing of knowledge that is useful for businesses, industries, and society as a whole.
- Sharing knowledge from society and industry that is useful in education and research.





CONFLUENCE

Active international cooperation

Close cooperation with industry

Interdisciplinary collaboration

Interdisciplinary collaboration

- RU emphasizes the importance of interdisciplinary collaboration and that education and the creation of new knowledge are often most substantial at the boundaries of disciplines.
 - Cross-disciplinary cooperation in research and education is necessary to address some of the challenges humanity faces in the 21st century.
 - Being a small, cohesive university housed in one building facilitates easy communication and efficient cooperation across departments.
 - RU celebrates interdisciplinary activities that emerge as serendipitous, grassroots initiatives and will continue to support them.
- RU will develop a framework that encourages, supports, and rewards cross-disciplinary activities that create and share new knowledge.
 - RU will consider establishing an institutional framework that incentives and supports multi-disciplinary work where researchers from different disciplines can apply for seed funding to support cross-disciplinary work. The application and review processes in such schemes are lightweight and fast-tracked.
 - RU will look into creating flexible workspaces dedicated to working on interdisciplinary projects within the University.





EXCELLENCE

Desirable workplace

Modern facilities and a supportive environment for study and research

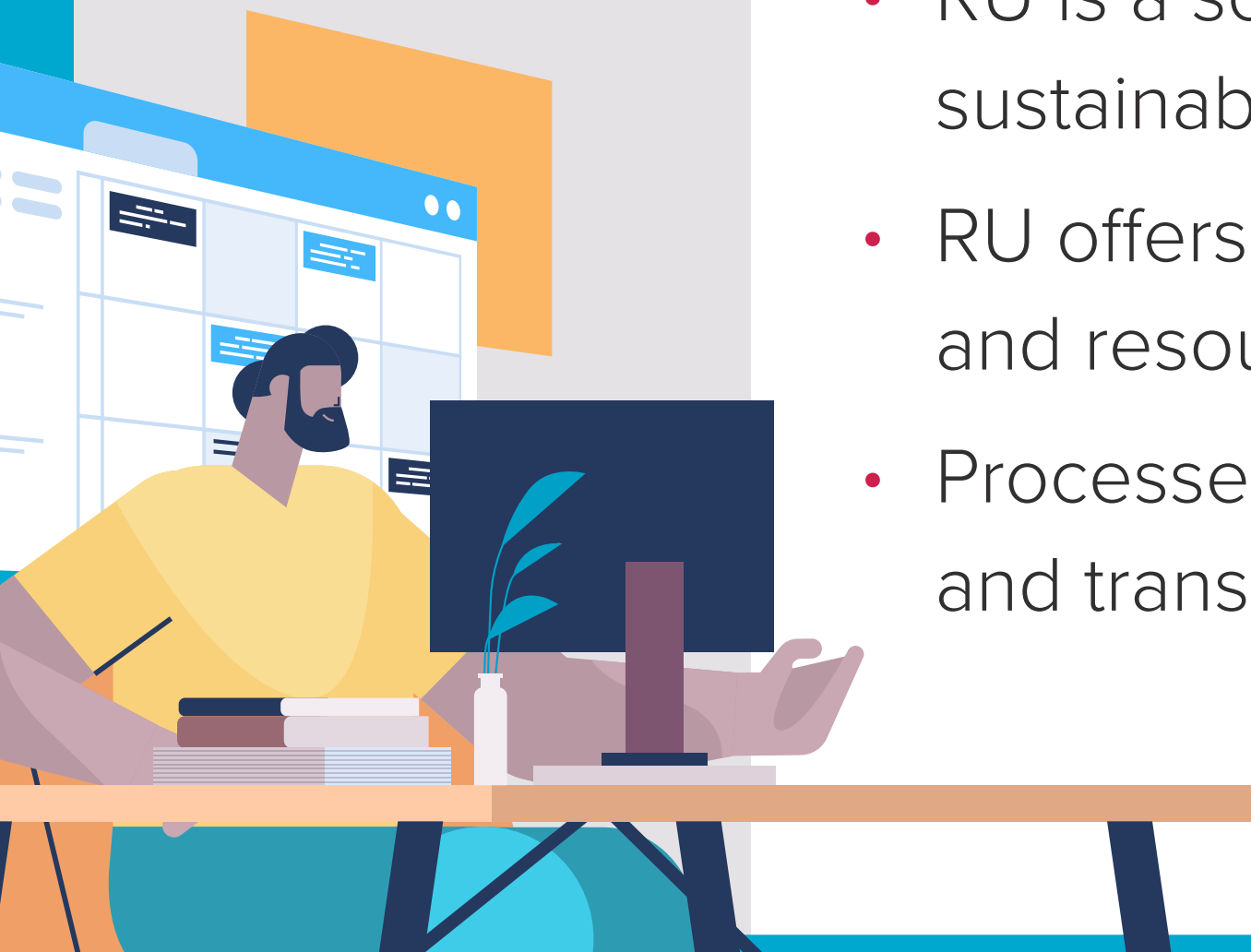
Constant monitoring of quality for improvement

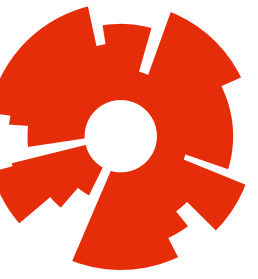
Desirable workplace

RU strives to be a desirable workplace to attract good staff and students.

KEY POINTS:

- RU is a professional, flexible, and constructive workplace focused on equal rights and fairness.
- RU is diverse, tolerant, encouraging, and health-promoting for the mind and body.
- RU is attentive to work-life balance and personal well-being, family-friendly, with a clear focus on constant job development.
- RU is a socially responsible workplace with a clear focus on sustainability and matters of the environment
- RU offers good facilities to staff and students and the infrastructure and resources needed to carry out work successfully.
- Processes at RU should be mapped and all decision-making clear and transparent.





EXCELLENCE

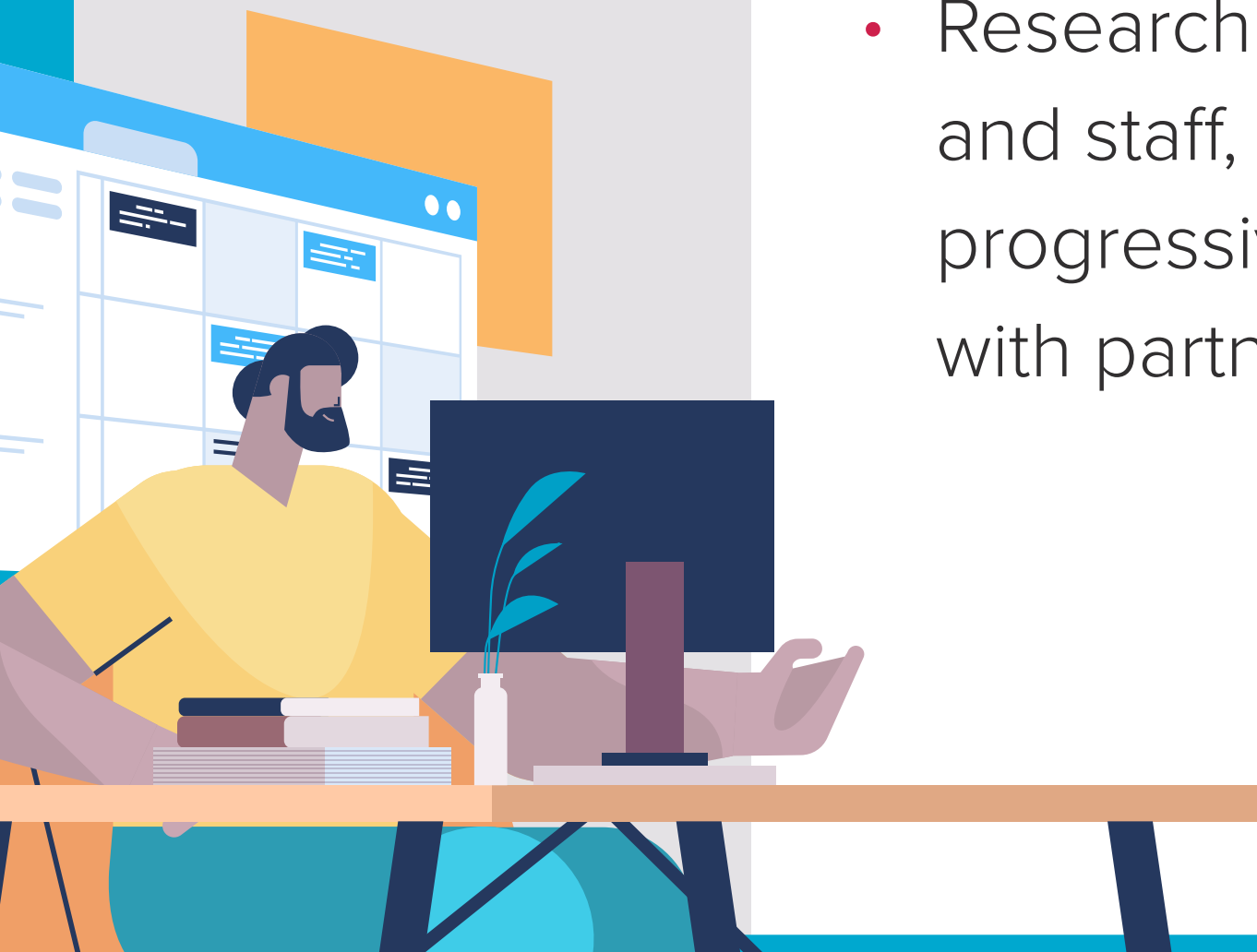
Desirable workplace

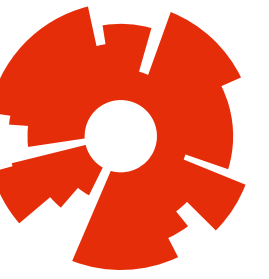
***Modern facilities
and a supportive
environment for study
and research***

*Constant monitoring of
quality for improvement*

Modern facilities and a supportive environment for study and research

- RU strives to provide students and staff with accessible work facilities and equipment access. The University's systems and organization support the University's core operations in education and research.
- RU operates an integrated learning support network that ranges from systems such as an electronic syllabus and predictive curriculum development to the implementation of best practices for assessing and developing the quality of education and robust student counseling and service support.
- Research support in RU includes good supervision of research students and staff, assistance obtaining grants and operating large research projects, progressive software and equipment development, and meaningful networking with partners outside the University.





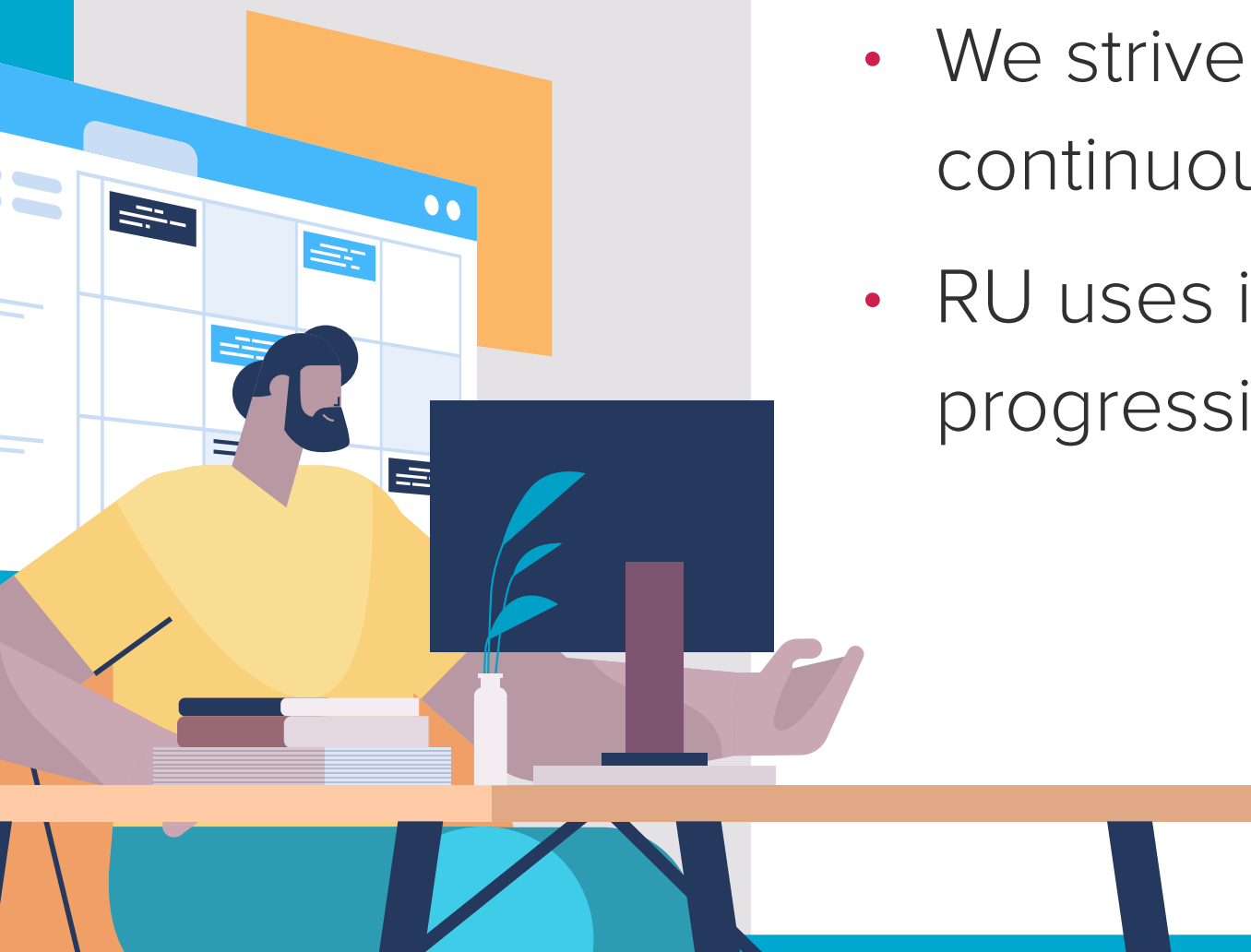
EXCELLENCE

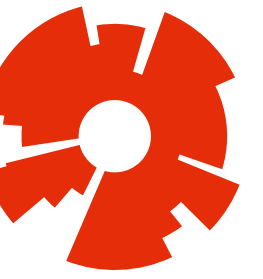
*Desirable workplace
Modern facilities and a
supportive environment
for study and research*

***Constant monitoring of
quality for improvement***

Constant monitoring of quality for improvement

- RU uses various methods to assess the quality of its organization and follows progressive international development in quality assessment of education.
- Employees use data and assessment results to improve continuously:
 - Studies, programs, and courses
 - Research work, sharing of knowledge, and its utilization
 - Service to students and staff
 - Cooperation between units, academies, companies, industries, and society.
- We strive to ensure quality and safety within RU's operations and work towards continuous improvement.
- RU uses international standards, certifications, and specially selected progressive universities as a reference in its quality assurance system.





Responsibility, implementation and application of RU's strategy

The President, Deans, Department Chairs, and other managers

- Implement and apply RU's strategy for their units and cooperate on its implementation.
- Manage the strategy's action plan for their units and follow up.





Purpose and scope of RU's strategy 2022-2023

- The strategy underlines **RU's commitment** to society, students, and staff.
- The strategy serves as a guiding light and standard and should be used as a benchmark in **all operations** of the University.
- The RU strategy for 2022-2023 has a short period of validity, but work is currently underway to further formulate **RU's strategy for 2024-2030**.

